

Public Representatives Briefing to

Public Representatives MLAs and MPs

Friday 23 October 2020

Agenda for today's Briefing

- **Introduction:** Dr. Anne Kilgallen, Chief Executive and Mr Sam Pollock, Chairman
- **Presentation:**
 - Acute Hospital Services (Geraldine McKay)
 - Community Services (Dr Bob Brown)
 - Women and Children's Services (Deirdre Mahon)
 - Adult Mental Health & Disability Services (Karen O'Brien)
 - Reset and Rebuild Services Update (Teresa Molloy)
 - PPE Update (Neil Guckian)
 - Testing / Flu Vaccine Campaign (Dr Catherine McDonnell)
 - Other Key updates
- **Questions and Answers**
 - Summing Up (Dr. Anne Kilgallen)
 - Thank You (Mr Sam Pollock, Chairman)

Current position

(at Thursday 22/10/2020)

Confirmed CV-19 in Hospital

80

Total Confirmed Patients

327³³²

Confirmed Admissions

CV-19 Deceased

48

Last COVID-19 Death: 22 October 2020

COVID-19 Confirmed Currently in Hospital

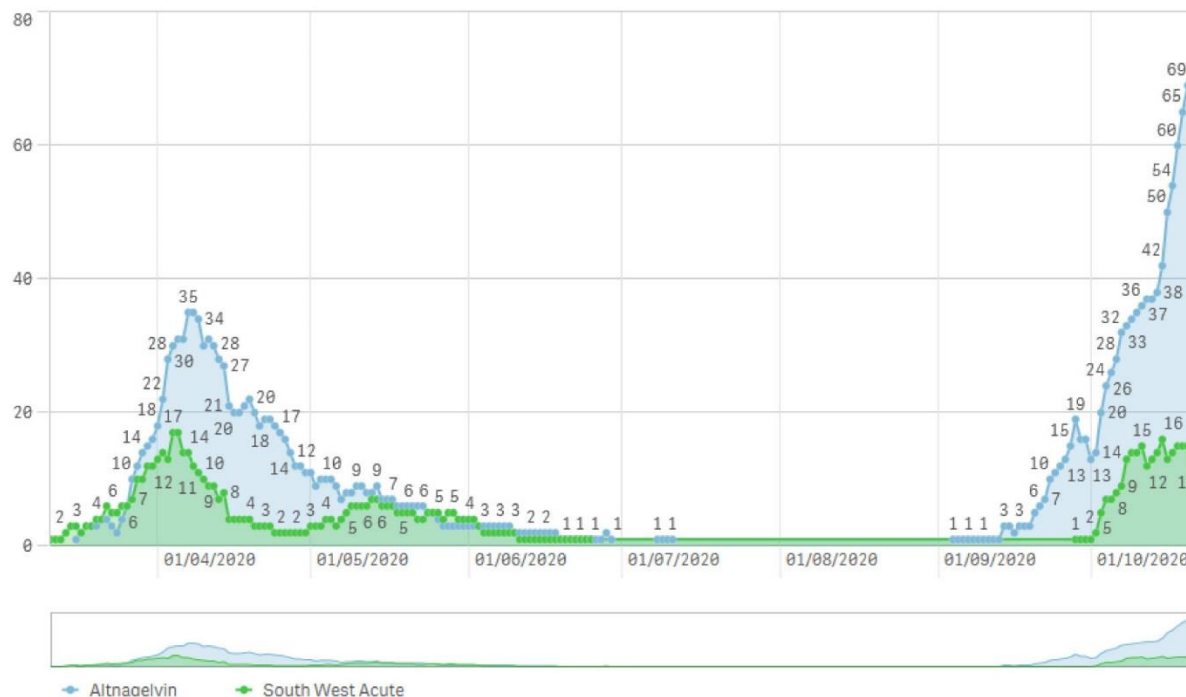
South West Acute

12

68

Altnagelvin

COVID-19 Confirmed In Hospital by Site



www.westerntrust.hscni.net/western-trust-covid-19-information-updates

For all updates and information



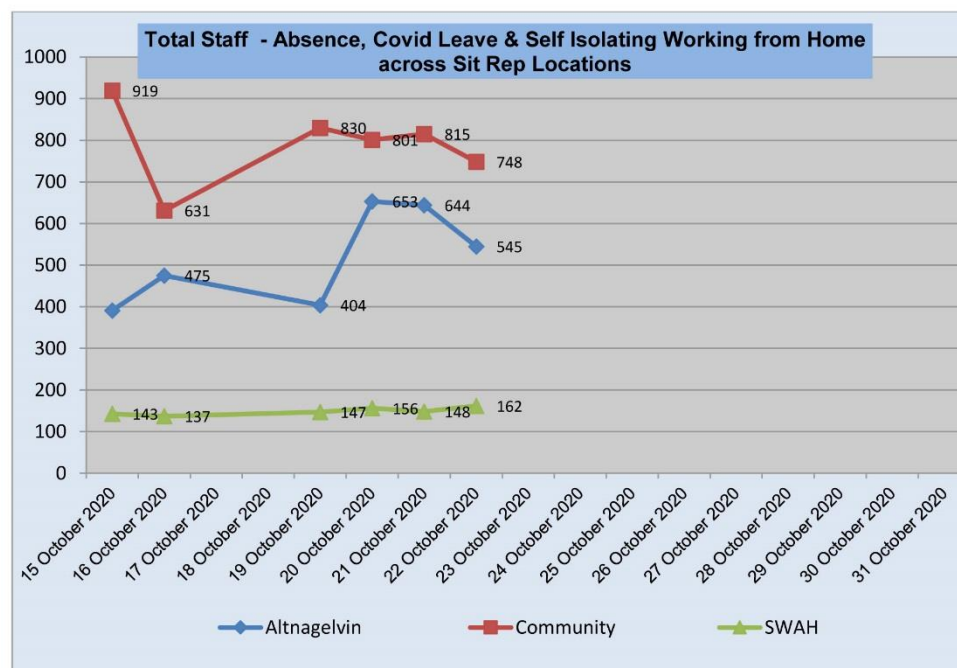
Current position

(at Thursday 22/10/2020, changes daily)

Workforce Challenges

- COVID-19 Symptoms 241
- Self Isolating 378
- Staff Sickness 636
- Absence (Assoc. Childcare) 23
- TOTAL Unavailable 1,278
- % of Workforce 11.33%

Staff Absence & COVID Leave 22nd October 2020							
Directorate	Staff Self Isolating & Working From Home (1)	Staff Isolating At Home Not Working (2)	Staff Sickness Absence (3)	Staff Sickness Absence COVID Symptoms (4)	Absence Associated with Childcare (5)	Total	% of Workforce unavailable (Total of 2-5)
Altnagelvin SIT REP	39	180	189	125	12	545	11.68%
Community SIT REP	133	163	331	110	11	748	11.45%
SWAH SIT REP	5	35	116	6	0	162	9.97%
Total	177	378	636	241	23	1455	11.33%



Corporate Priorities

COVID-19 Surge Response

- Hospital services at High (SWAH) to Extreme (Alt)
- Community services impacted
- Multi-Agency
- Communications

Rebuild - Phase 2 (Jul-Sept)

- Broadly achieved predicted position
- Challenges: OP reviews;
Psychological therapy reviews;
Domiciliary care restart

Phase 3 Rebuild (Oct-Dec)



Teresa Molloy
Director of
Performance &
Service
Improvement

Hospital Services:

- Services Impacts
- Patients
- Staff
- Other Key points:
 - Orthopaedic Services
 - Cancer Services



Geraldine McKay
Director of Acute
Services



Altnagelvin ED Re: External waiting

- Background
- Measures Taken
- Short/Medium Term
- Long Term



Community Services:

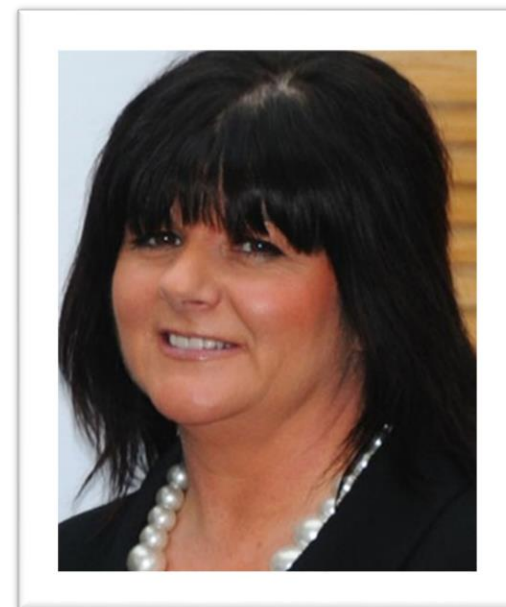
- Home Care and Carers
- Independent Sector
 - Services Impacts
 - Patients
 - Staff
- Other Key points:
 - Greenhaw Lodge Care Home



Dr Bob Brown
Director of
Primary Care and
Older People's Services /
Executive Director
of Nursing

Women & Children's Services:

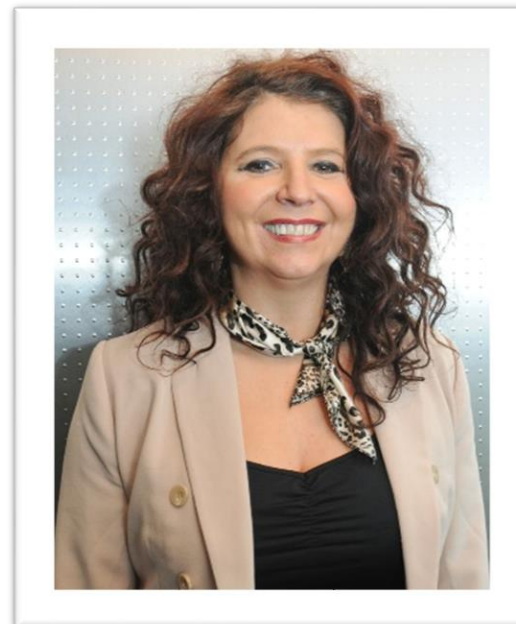
- Services Impacts
- Clients / Patients
- Staff
- Other Key areas:
 - Family and child care services:
child protection and impact on placements
 - Children disability (respite)
 - Neonatal
 - Antenatal
 - CAMHS



Deirdre Mahon
Director of
Women and Children's
Services and
Executive Director of
Social Work

Adult Mental Health & Disability Services

- Services Impacts
- Patients / Service Users
- Staff
- Other Key points
 - Mental Health Referrals



Karen O'Brien
Director of
Adult Mental Health
& Disability Services

PPE Update:

- Strong Supply Lines established – except FFP3 Respirator Masks
- Regional FFP3 Mask Strategy
- Local National & International Supply Lines
- Variable Face Fit Pass Rates
 - Particularly in the West
- Significant Increase in Face Fit Testing
- Region considering (via Risk Assessment) Reusable Respirator Mask



Neil Guckian
Director of
Finance

Use of FFP3s:

4 Sept 2020 – weekly use 4,300

16 Oct 2020 – weekly use 11,000

} increase of 339%

Testing Update

Flu Vaccine Campaign



Dr Catherine McDonnell
Medical Director

Other Key Updates:

- Surgical Services

South West Acute Hospital

- Out of hours Rota
- Elective Surgery



Dr Anne Kilgallen
Chief Executive

Questions And Answers

Due to time constraints, any questions we do not get to today these will be issued through the Public Representatives E-Brief and on the Online Hub:

westerntrust.hscni.net/public-representatives

For any follow-up enquiries please contact Single Point of Contact:
Chris Curran, Public Affairs Manager