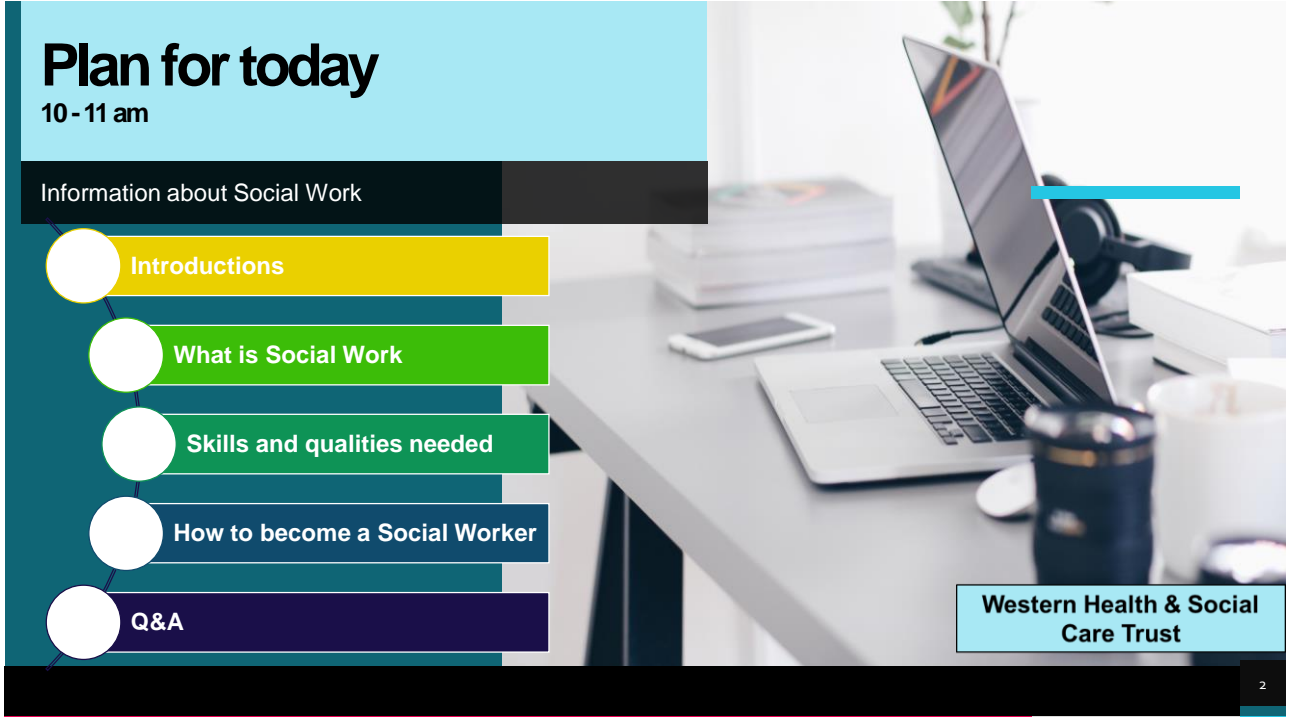




On line event

Social Work as a Career

Western Health and Social Care Trust



Plan for today

10 - 11 am

Information about Social Work

Introductions

What is Social Work

Skills and qualities needed

How to become a Social Worker

Q&A

Western Health & Social Care Trust

Poll

Why are you here today?

I am here today because.....



Looking for a path...

Why choose a career in Social Work?

Western Health & Social Care Trust

Focus of Social Work.

What is Social Work?

The International definition of social work.
 "The social work profession promotes social change, problem solving in human relationships and the empowerment and liberation of people to enhance well-being..."



 SOCIAL JUSTICE	 COMMUNITY	 SAFETY AND PROTECTION	 CREATING CHANGE	 INDIVIDUAL AND TEAM WORK
Challenges injustice and oppression	Social work takes place within the community	Social work is responsible for protecting and building safety for children and adults at risk of harm	Social work believes in peoples' strengths to create change	As a social worker you work individually and with others



Message from Young People with care experience and the Social Workers involved in their lives.



View the Video here: <https://youtu.be/84bE1M6Usz0>

Break out rooms
10 minutes



Experiences of a social worker.

- Our Journey
- Why Social Work
- Where we have worked

What does a Social Worker do?

Western Health & Social
Care Trust

Showing your skills / aptitude for Social Work

THE SOCIAL WORKER QUALITIES

SOME WHICH ARE...



Interest/experience in working with people

Trust worthy

Communicate well (written and verbal)

Manage difficult/sensitive situations

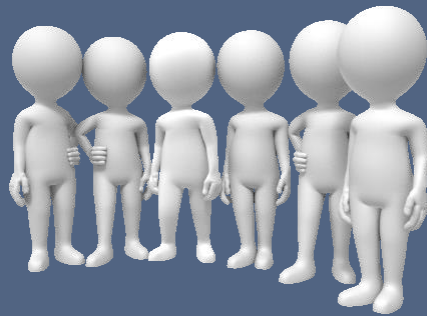
Speak up for those who need a voice (advocacy)

Offer support / promote wellbeing

Treat people with respect and compassion

What do you bring to the role?

- Personal Experiences
- Skills
- Qualities
- Values



How do you become a Social Worker?

3 Year Degree (other routes available)
Queen's University Belfast
Ulster University
Belfast Metropolitan College
South West College, Dungannon



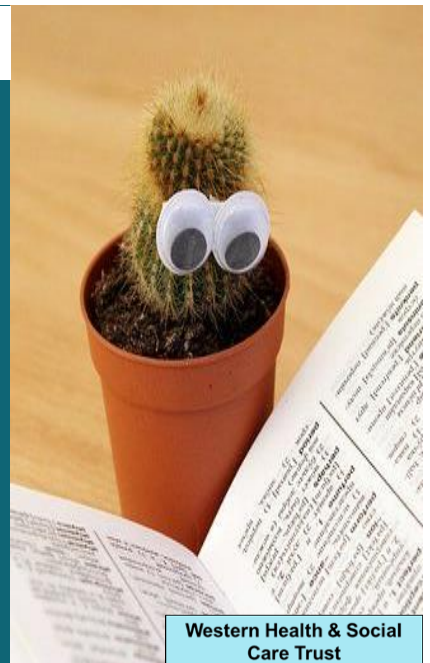
UCAS
 3 A-level subject required / no specific subject
 Personal Statement



Interview
 Demonstrate understanding of social work
 Draw on your experience and qualities



50 / 50 Academic and Practice learning
 Year 1 – Academic + PfPL
 Year 2 – Academic + 85 days placement
 Year 3 – Academic + 100 day placement

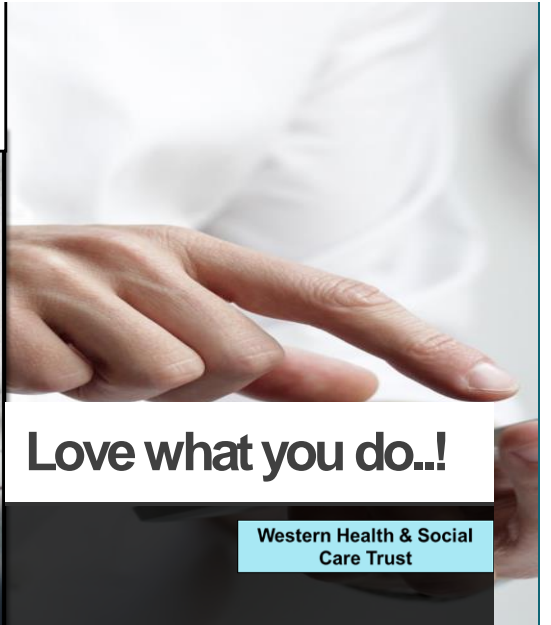
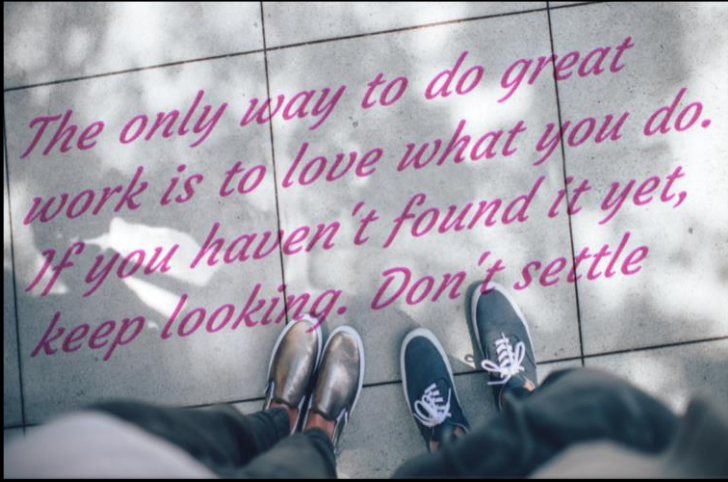


**Western Health & Social
 Care Trust**

[A Career in Social Work | Applying to the Degree in Social Work \(niscc.info\)](https://www.niscc.info)

Q&A

Post questions in the chat box privately or to everyone



Love what you do..!

Western Health & Social Care Trust



Thank You

Evaluation by
Speaker4Schools

SSLD@GT

Tel: 02871

SSLD>@westerntrust.hscni.net

Western Health & Social Care Trust

