

# **Covid-19 Briefing to Public Representatives MLAs and MPs**

## **Friday 10 April 2020**

[www.westerntrust.hscni.net/western-trust-covid-19-information-updates/](http://www.westerntrust.hscni.net/western-trust-covid-19-information-updates/)

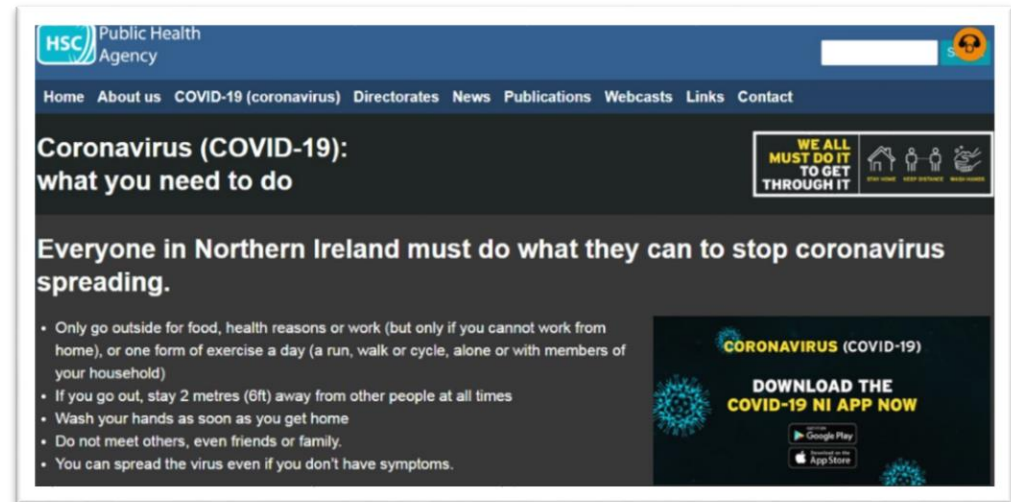
## Covid-19 Pandemic...

- Unprecedented situation
- Outside of our comfort zone
- Public confidence
- Staff morale and welfare
- Service continuity
- Our staff and the public safety



# Regional direction in dealing with Covid-19

- Staff Testing
- Community Testing
- Contact Tracing
- Nightingale Hospital
- Paediatric Services
- PPE/Equipment subject to regional and global availability and allocations from national stockpiles



# HOSPITAL Surge Planning:

- Critical Care
- Covid Areas / Non Covid Areas
- Redeployment / Upskilling of Staff
- Early Discharge
- Downturn / Time Critical activity



[www.westerntrust.hscni.net/western-trust-covid-19-information-updates/](http://www.westerntrust.hscni.net/western-trust-covid-19-information-updates/)

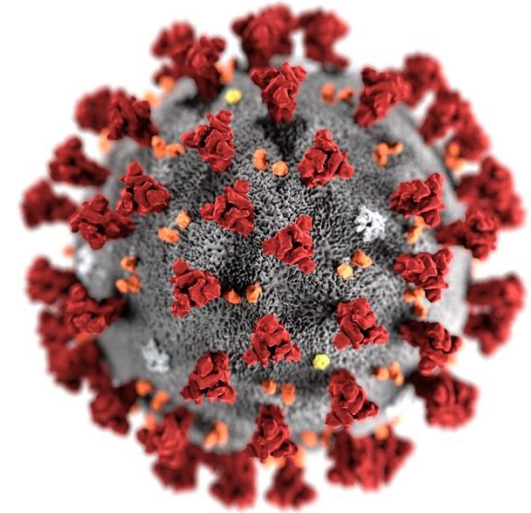


## COMMUNITY Surge Planning:

- **Community Beds Plan**
- **Independent Sector Support**
- **Domiciliary Care/Direct Payments**
- **Mental Health & Learning Disability Services**



- **Multi-Agency collaboration**
- **VIP Programme**
- **Health and Wellbeing**
- **Domestic Violence**
- **Impact of Lockdown on Children**



# Paediatric Services

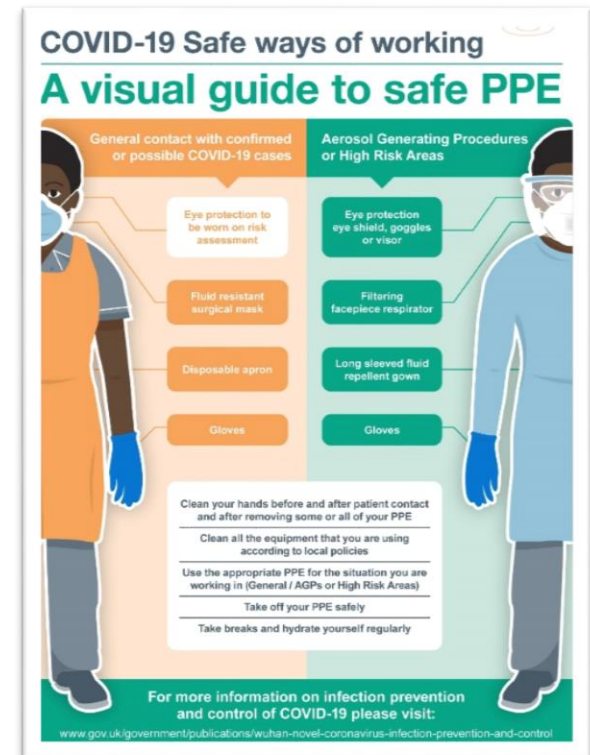
- **Temporary service reconfiguration**



[www.westerntrust.hscni.net/western-trust-covid-19-information-updates/](http://www.westerntrust.hscni.net/western-trust-covid-19-information-updates/)

# Personal Protective Equipment (PPE):

- Regional stockpiles of “specialist” PPE
- General supplies
- Escalating consumption
- Community staff requirement
- New supply chains
- Changing guidance





# Healthcare Worker Testing:

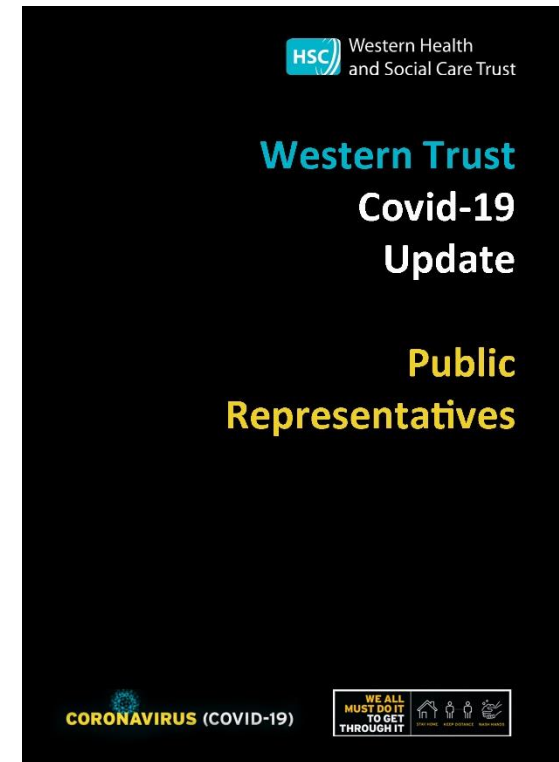
- Local Testing (CTRIC and Killadeas)
- Daily capacity
- National HCW Testing Programme
- Derry venue planned for 12 April
- Trust arrangements



[www.westerntrust.hscni.net/western-trust-covid-19-information-updates/](http://www.westerntrust.hscni.net/western-trust-covid-19-information-updates/)

# Communication and Updates:

- **Weekly Public Representatives Ebrief**
  - Issue 1: 13 March
  - Issue 2: 20 March
  - Issue 3: 30 March
  - Issue 4: 7 April
  - Issue 5: 21 April
- **Enquiries and contact:**
  - Chris Curran



[www.westerntrust.hscni.net/western-trust-covid-19-information-updates/](http://www.westerntrust.hscni.net/western-trust-covid-19-information-updates/)

# A sincere THANK YOU

- Our elected representatives
- Our Community and Voluntary Sector
- Business Community / Individual donations
- A duty to create an environment of HOPE
- **Working together to save lives**



<b>No. Received</b>	<b>155</b>		
<b>Sector Breakdown</b>	<b>DC&amp;SDC</b>	<b>CCG</b>	<b>FODC</b>
<b>No. Forwarded to Councils</b>	<b>5</b>	<b>6</b>	<b>87</b>
<b>No. With Social Work Teams</b>	<b>38</b>		<b>8</b>
<b>Wrong Trust/Forwarded on</b>	<b>7</b>	<b>4</b>	
<b>Cases Closed</b>	<b>2</b>	<b>79</b>	

[www.westerntrust.hscni.net/western-trust-covid-19-information-updates/](http://www.westerntrust.hscni.net/western-trust-covid-19-information-updates/)



Breakdown	N. Sector	S. Sector
No. Requesting Food	52	65
No. Requesting Medicine	16	60
No. Requesting Fuel/Transport	3	3
No. Requesting Social Support	21	31
Cases With Support not Identified	N/A	

[www.westerntrust.hscni.net/western-trust-covid-19-information-updates/](http://www.westerntrust.hscni.net/western-trust-covid-19-information-updates/)