



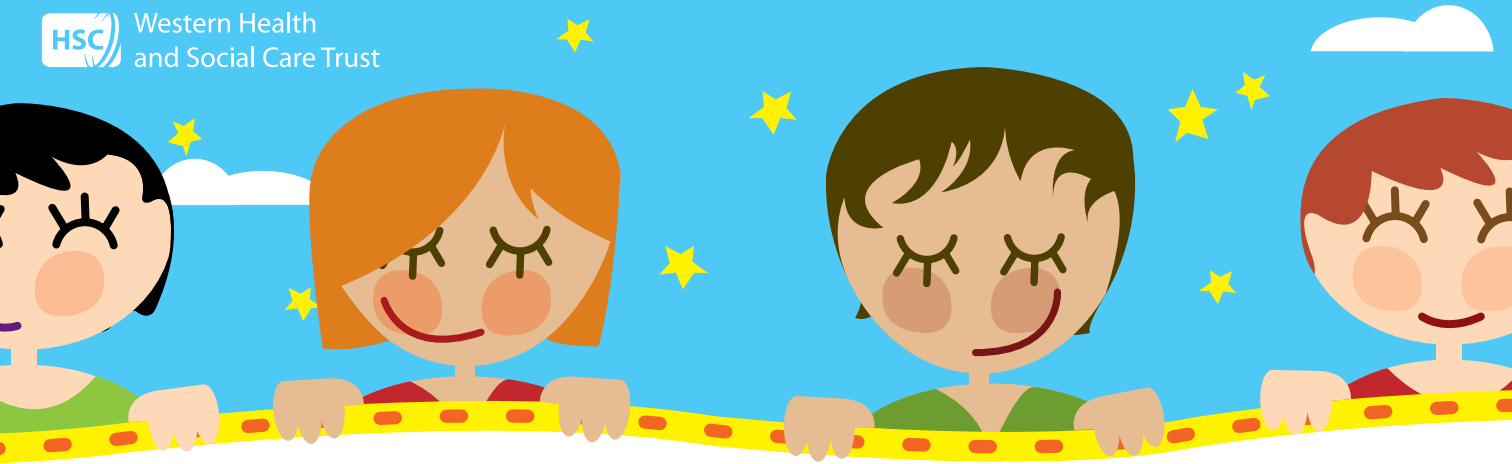
Western Health  
and Social Care Trust



# Breastfeeding GROUPS

[Click here  
to go  
forward.](#)

Press 'esc' on your keyboard to exit at any time.



**Waterside SureStart**  
Ebrington Business Pk  
Waterside  
L/Derry

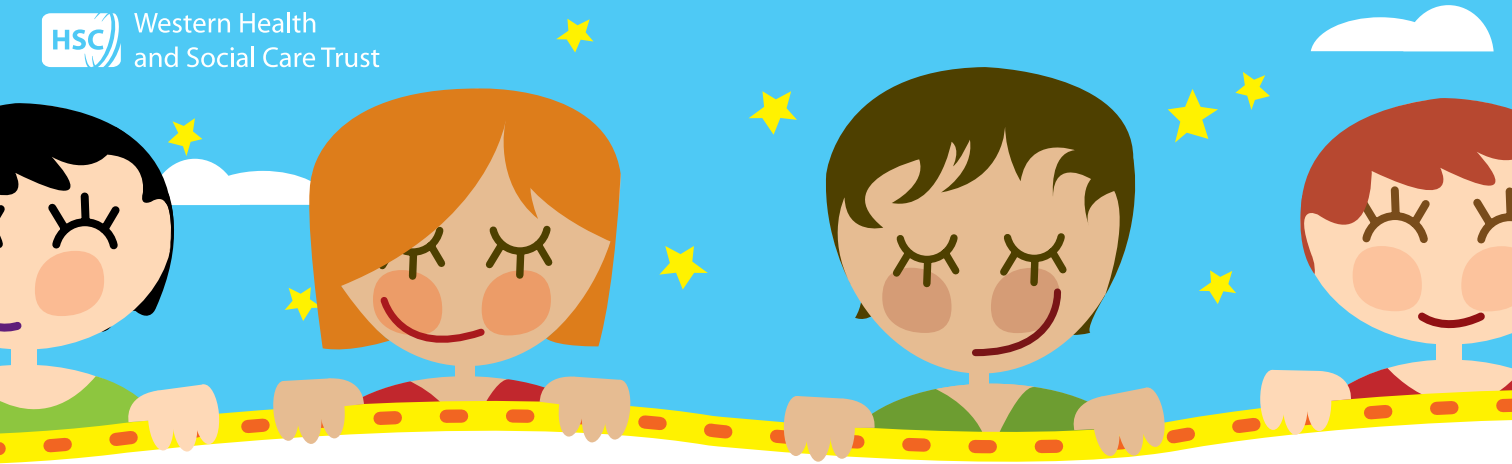
028 7134 7186  
Wednesday 10.00am - 12noon

[Click here  
to go  
back.](#)

[Click here  
to go  
forward.](#)

You do not have to be a member of SureStart to attend a Breastfeeding Support Group

Press 'esc' on your keyboard to exit at any time.



## Derry Wellwoman

Queen Street

L/Derry

028 7136 0777

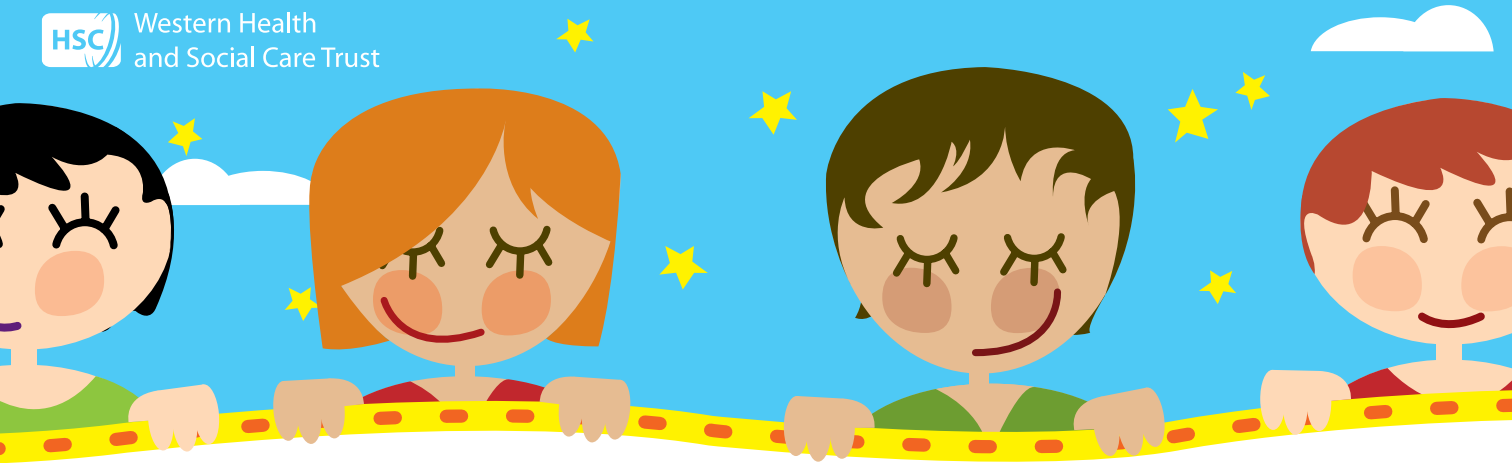
Thursday 10.00am - 12noon

[Click here  
to go  
back.](#)

[Click here  
to go  
forward.](#)

You do not have to be a member of SureStart to attend a Breastfeeding Support Group

Press 'esc' on your keyboard to exit at any time.



## Strabane SureStart

Melmount Road  
Strabane

028 7138 2658

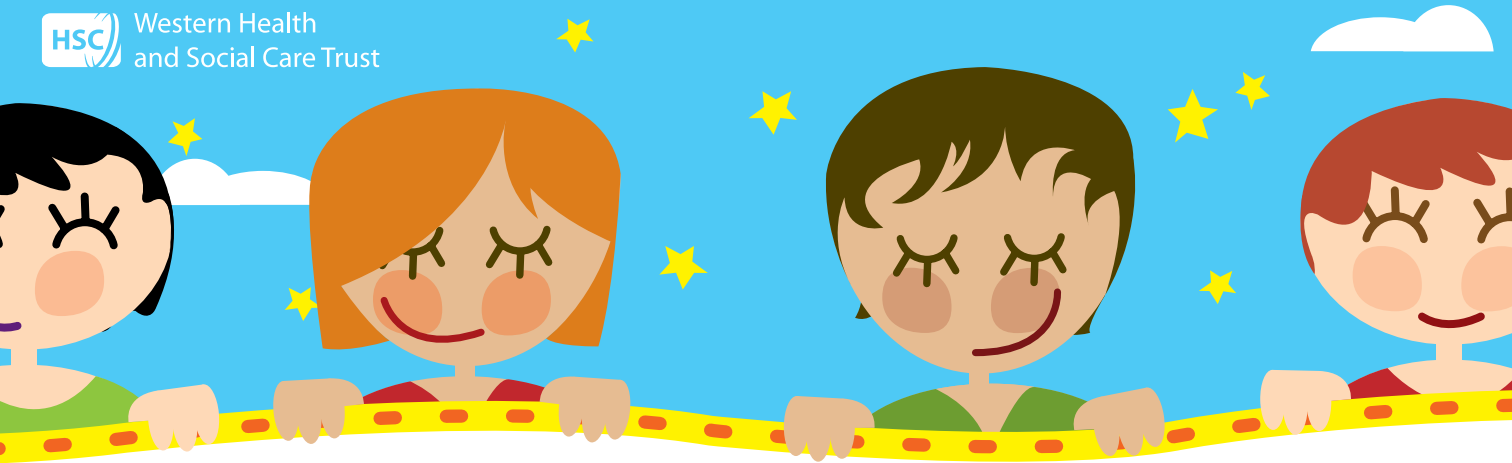
Wednesday 10.00am - 11.30am

[Click here  
to go  
back.](#)

[Click here  
to go  
forward.](#)

You do not have to be a member of SureStart to attend a Breastfeeding Support Group

Press 'esc' on your keyboard to exit at any time.



## Dungiven SureStart

Dry Arch Centre

Dungiven

028 7774 2904

Thursday 10.30am - 11.30am

[Click here  
to go  
back.](#)

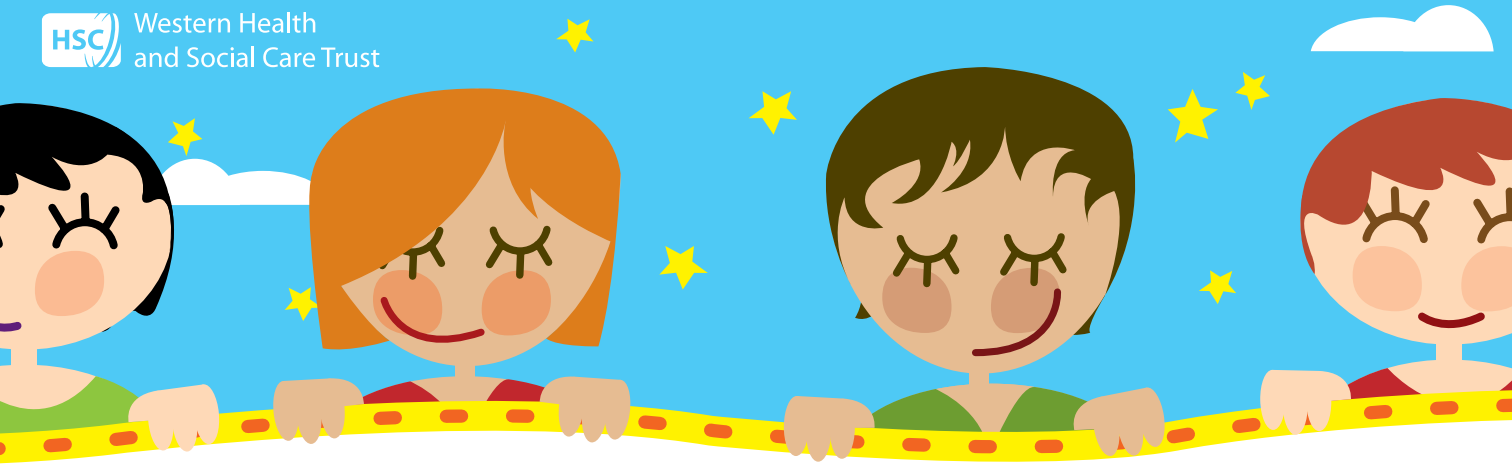
[Click here  
to go  
forward.](#)

You do not have to be a member of SureStart to attend a Breastfeeding Support Group

Press 'esc' on your keyboard to exit at any time.



Western Health  
and Social Care Trust



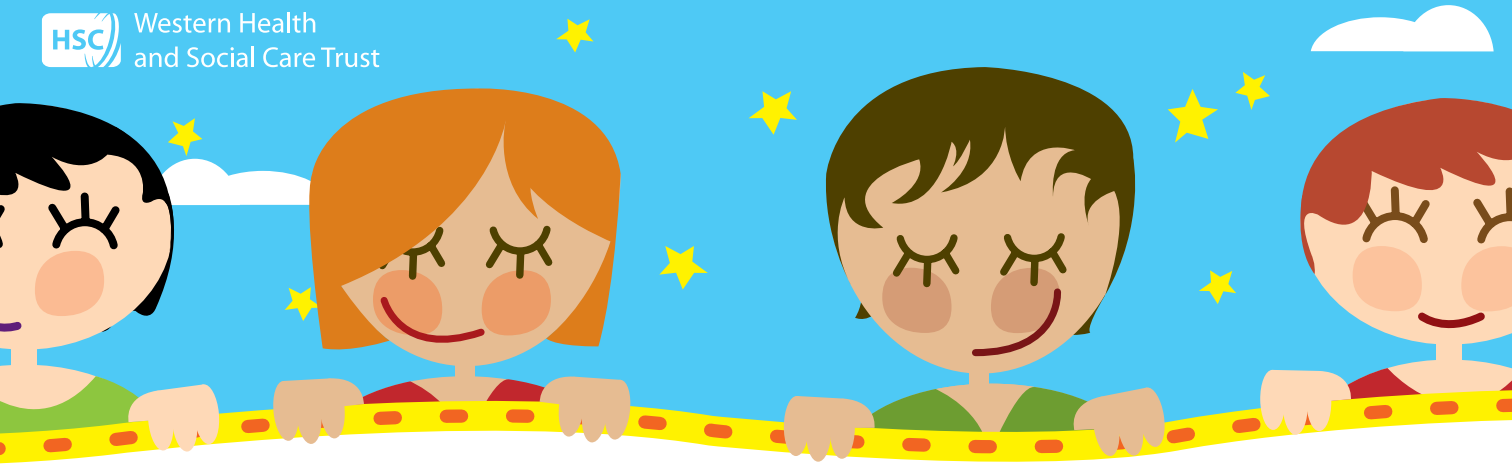
**SureStart**  
**Edenballymore**  
**Healthy Living Centre**  
Central Drive  
Creggan  
L/Derry

028 7137 3870  
Tuesday 10.00am - 12noon



You do not have to be a member of SureStart to attend a Breastfeeding Support Group

Press 'esc' on your keyboard to exit at any time.



## Breastfeeding Group

Dry Arch Centre

Limavady

028 7772 9826

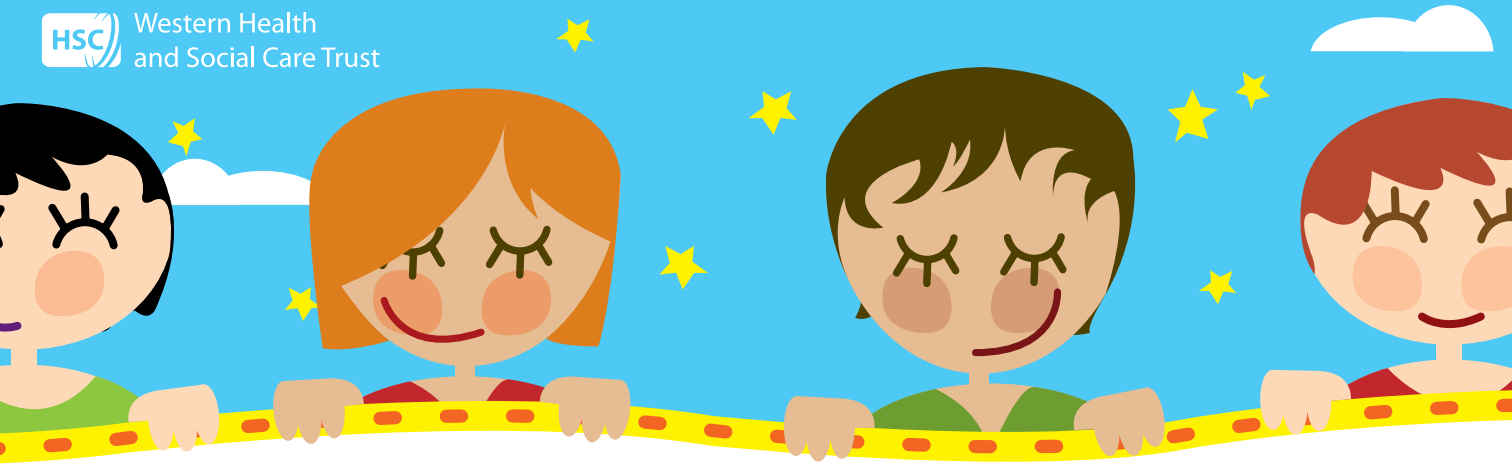
Thursday 11.00am - 12noon

[Click here  
to go  
back.](#)

[Click here  
to go  
forward.](#)

You do not have to be a member of SureStart to attend a Breastfeeding Support Group

Press 'esc' on your keyboard to exit at any time.



## Breastfriends Castlederg

Rainbow Surestart

16 Hospital Road

Castlederg

028 8167 9483

Friday 11.00am - 12noon

Baby Time: Contact Rainbow SureStart

[Click here  
to go  
back.](#)

[Click here  
to go  
forward.](#)

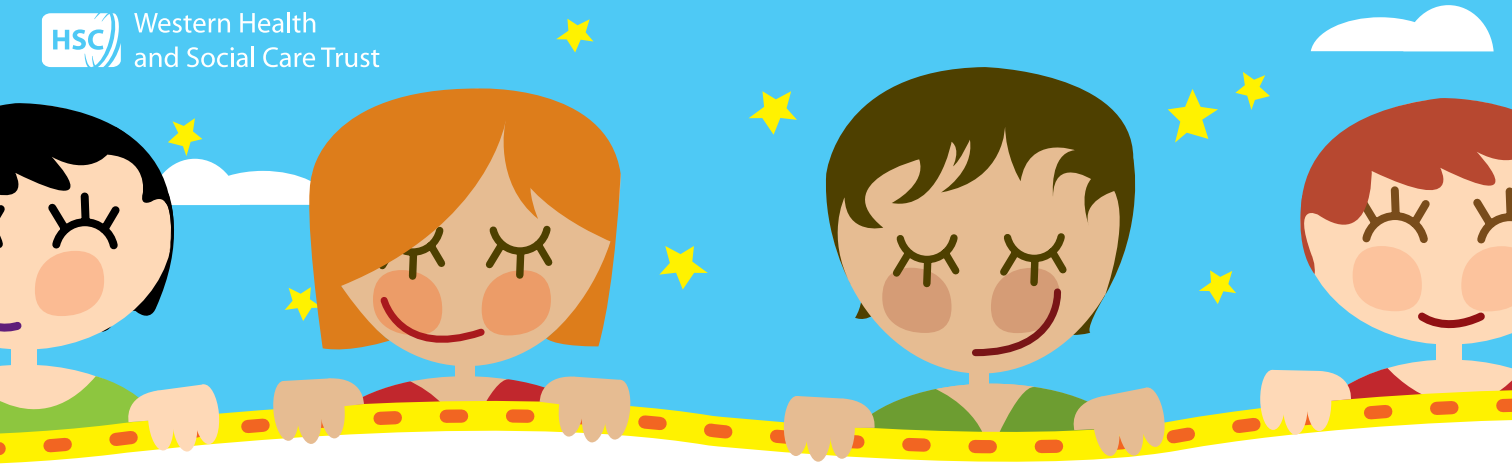
You do not have to be a member of SureStart to attend a Breastfeeding Support Group

Press 'esc' on your keyboard to exit at any time.





Western Health  
and Social Care Trust



# **Mother & Baby Group Shantallow SureStart**

Carnhill Resource Centre  
L/Derry

028 7135 6110

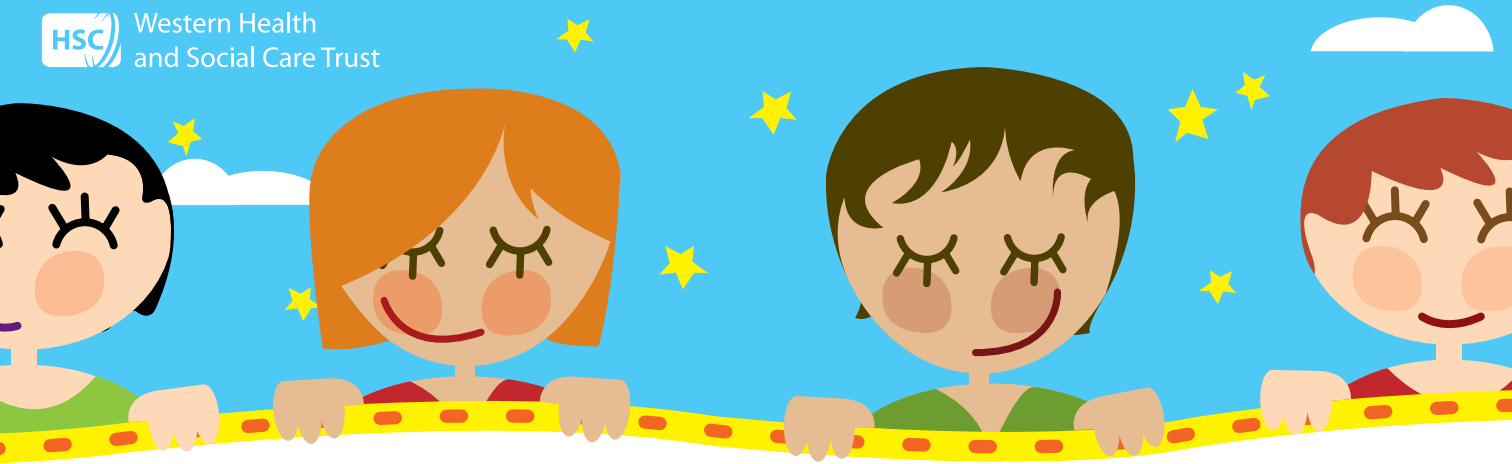
Tuesday 11.30am - 12.30pm

Click here  
to go  
back.

Click here  
to go  
forward.

You do not have to be a member of SureStart to attend a Breastfeeding Support Group

Press 'esc' on your keyboard to exit at any time.



# The M Club Little Hands SureStart

Rosemount Primary School  
L/Derry

028 7126 7524

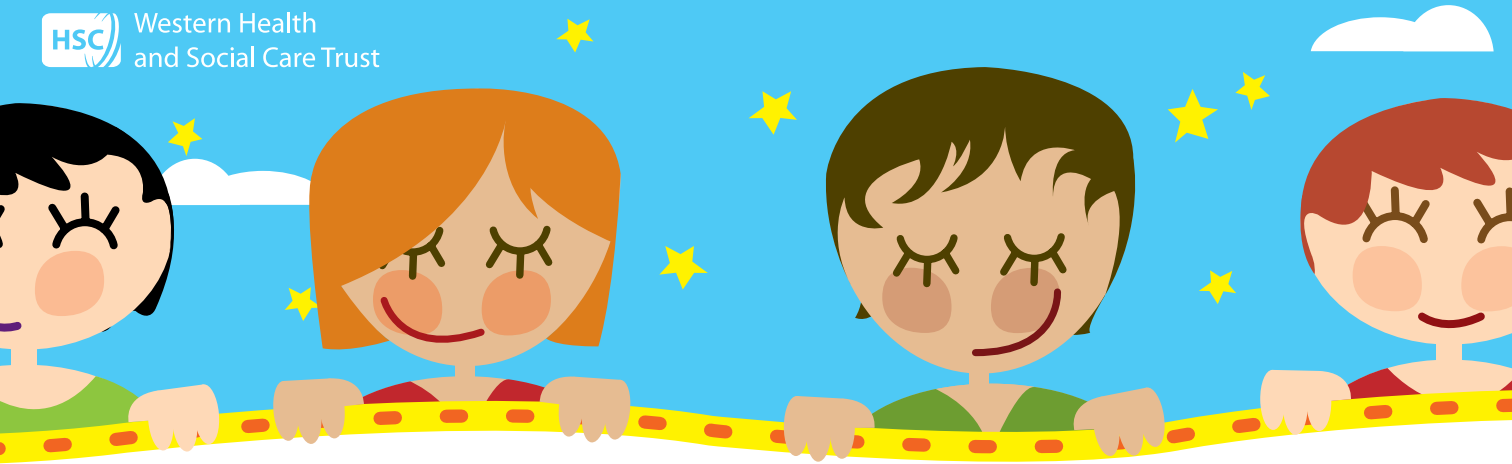
Monday 10.00am - 12noon

[Click here  
to go  
back.](#)

[Click here  
to go  
forward.](#)

You do not have to be a member of SureStart to attend a Breastfeeding Support Group

Press 'esc' on your keyboard to exit at any time.



## Breastfriends

Action for Children (Entrance via Wesley Street)  
Enniskillen

028 6862 8333

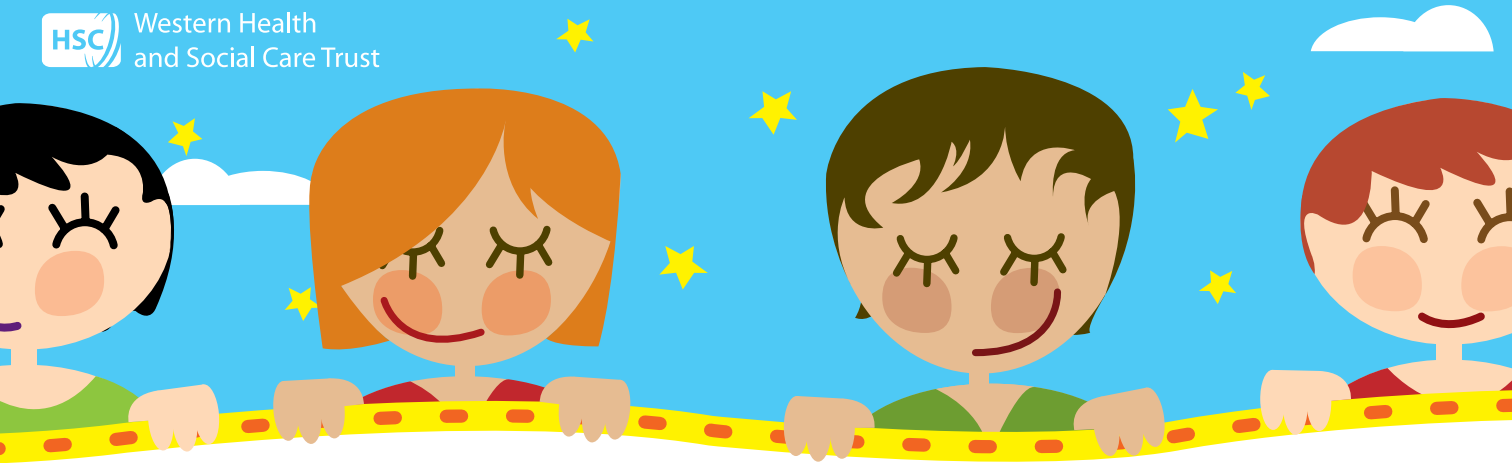
Thursday 10.30am - 12.30pm

[Click here  
to go  
back.](#)

[Click here  
to go  
forward.](#)

You do not have to be a member of SureStart to attend a Breastfeeding Support Group

Press 'esc' on your keyboard to exit at any time.



# Arc Healthy Living Centre

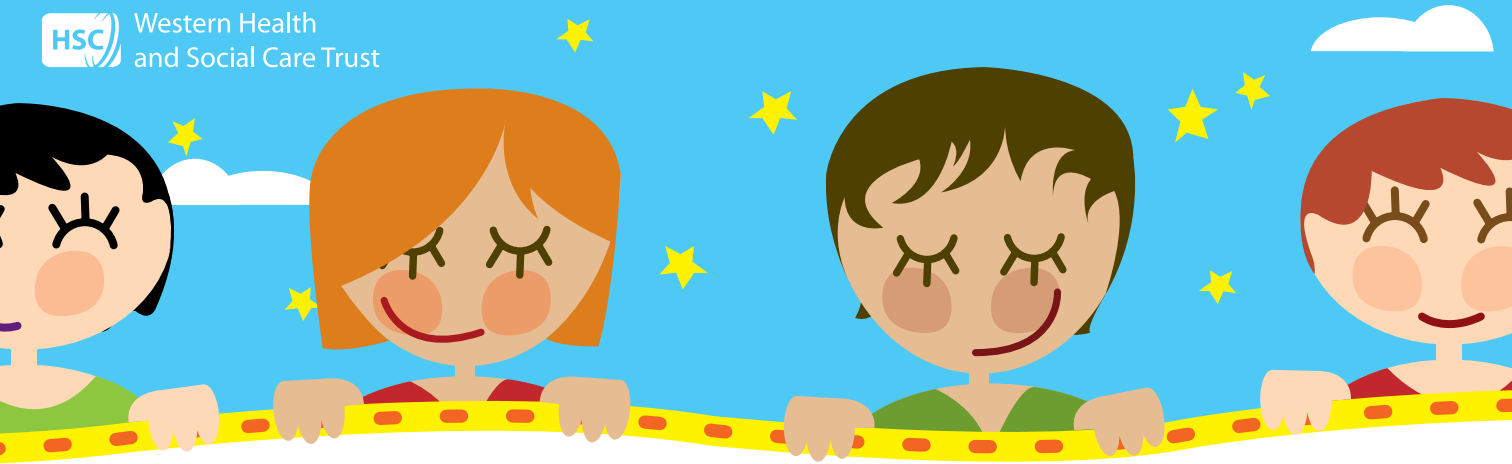
Sallyswood  
Irvinestown

T: 028 6862 1970  
Contact Deirdre



You do not have to be a member of SureStart to attend a Breastfeeding Support Group

Press 'esc' on your keyboard to exit at any time.



## Breastfriends Omagh

Omagh Library  
Omagh

T: 028 8283 5590

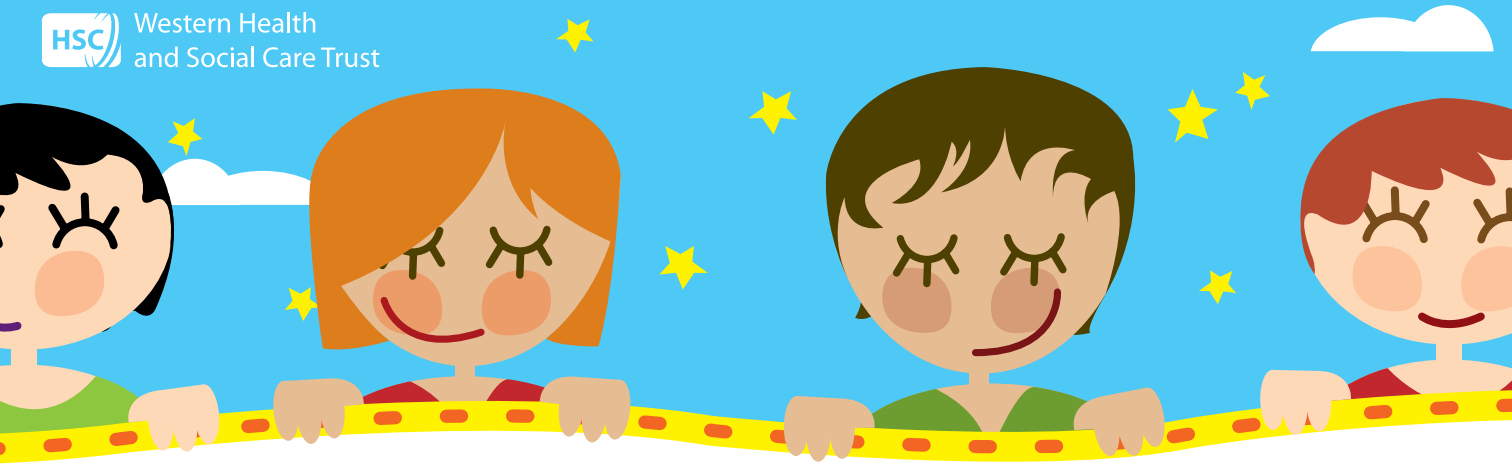
Tuesday 11.00am - 1.00pm

[Click here  
to go  
back.](#)

[Click here  
to go  
forward.](#)

You do not have to be a member of SureStart to attend a Breastfeeding Support Group

Press 'esc' on your keyboard to exit at any time.



## **SureStart Support Group**

Old Court House  
Newtownbutler

T: 028 6773 8063

Monday 11.00am - 12noon

[Click here  
to go  
back.](#)

[Click here  
to go  
forward.](#)

You do not have to be a member of SureStart to attend a Breastfeeding Support Group

Press 'esc' on your keyboard to exit at any time.